



Proudly serving those who live or work in 12 counties in Illinois as well as St Louis County.



We're Better Than The Banks.

If you're not checking with Catholic & Community Credit Union, it's time to make the switch. You'll enjoy the same services you get at a bank – without the service charges and fees!

- Save time with Mobile Money services
- Use a convenient, free network of 30,000 ATMs
- Get personal service at over 5,000 locations across the country
- Use Apple, Google & Samsung Pay to pay safely and securely
- Avoid checking service fees and account minimums

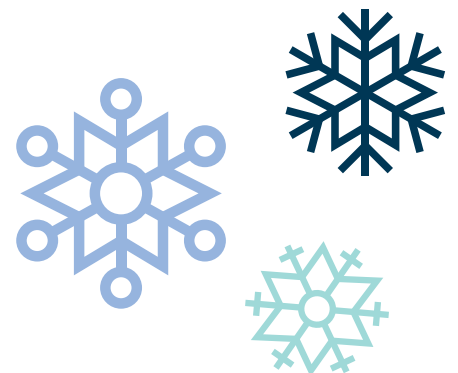
Plus, when you check with us, you're investing in your local community and fellow credit union members. Call or stop by one of our offices to learn more and open your account today!

STAY SAFE & SOUND

With a C&CCU Safety Deposit Box



If you need a secure place to keep important documents, treasured possessions or personal records, turn to the credit union you trust. We have safety deposit boxes available in sizes 3x5', 3x10' and 5x10', and prices start at just \$15 per year. Call the Shiloh Branch at 618-233-8073 for full details.



Thanks for Choosing C&CCU!



We know you have other financial options – but we're so glad you chose to invest in your local credit union. To say thank you, we deposited a bonus dividend of .50% APY* into primary savings accounts for the month of December. We hope you'll continue to come to us for all your loan, investment and checking needs.

*APY = Annual Percentage Yield. Bonus dividends were paid on accounts with balances over \$40. Fees could reduce earnings on account. Restrictions apply. Contact the credit union for complete details.

We've saved
our members more than
\$416,316.00
this year in interest and fees!

Have a Happier New Year

With a C&CCU Holiday Loan

**7.90%
APR**

No matter what you have planned for 2021 – learning something new, getting fit, or balancing your budget – a C&CCU Holiday Loan can help!

There's still time to borrow up to \$2,500 for rates as low as 7.90% APR!* Ring in the new year with a little extra jingle – and no extra fees, high rates or hidden charges.

We want you to have a happier new year, so contact one of our branches to apply for your C&CCU Holiday Loan today.

*APR=Annual Percentage Rate. Sample payment for \$1,000 borrowed for 11 months at 7.90% annual percentage rate is \$94.53. Rates and terms are subject to change, and availability is based on member creditworthiness and other factors. Member eligibility required. Offer available until Jan. 31, 2021. Loan amounts from \$500 to \$2,500. Maximum term is 11 months. Contact the credit union for complete details.

Make a Retirement Resolution Start by Saving With a C&CCU IRA

According to a new WalletHub survey, 97M Americans are kicking off the new year with new resolutions, so you'll be in good company if you're planning to step up your saving habits in 2021. C&CCU can help you get the right start on your financial resolutions with Individual Retirement Accounts.

Not only do these accounts help you ensure a balanced future budget, they come with immediate tax breaks! Make an investment before April 15, 2021, to maximize your tax benefits. Then, build on your balance with regular deposits – ask us about automating your contributions or making pre-tax deposits with payroll deduction.

Want to know more about supplementing your 401(k) or other savings with an IRA? Ask C&CCU how we can help you make a successful retirement resolution.

We're Putting Our Community First



Credit unions were founded on the idea of people helping people, and the COVID-19 pandemic has made that principle more important than ever. That's why C&CCU was honored to receive a federal grant that allowed us to give back to our community.

During 2020, we were able to match a portion of the grant funds and donate more than \$40,000 to St. Vincent de Paul, the Community Interfaith Food Pantry and the Credit Union Foundation. These funds were used for community empowerment in the areas hit hardest by the pandemic, supporting affordable housing efforts and giving local residents the help they needed.



candccu.com

Abby 24-Hour Touch Tone Teller
(618) 257-3861

MAIN OFFICE
1109 Hartman Ln.
Shiloh, IL 62221
(618) 233-8073

BRANCH OFFICES
6100 W. Main St.
Belleville, IL 62223
(618) 233-2212

1900 Carlyle Ave.
Belleville, IL 62221
(618) 222-1508

LOBBY HOURS
CLOSED

DRIVE-UP HOURS
MONDAY-FRIDAY
8am - 6pm
SATURDAY : 8am - noon

HOLIDAY HOURS
Our offices will close to observe the following holidays:

Martin Luther King Jr. Day
Monday, Jan 18
President's Day
Monday, Feb 15

Remember, even when we are closed, you can still access your accounts with online and mobile banking, as well as with your ATM or debit card.

Federally insured by
NCUA

